

# POWELL & BONNELL PASTURE 1422



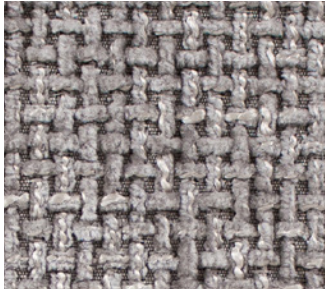
Cotton Wood 001



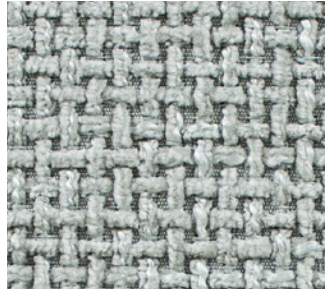
Goat 002



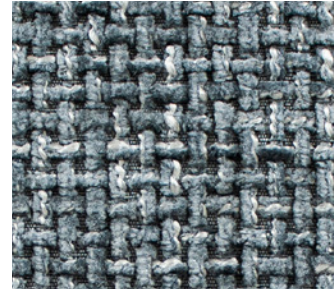
Down 003



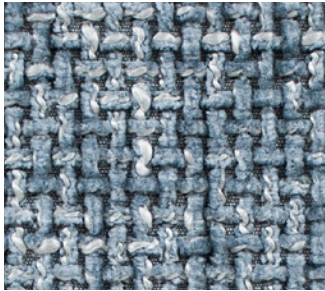
Guniea Fowl 004



Meadow 005



Shepherd 006



Sky 007



Bluestone 008



Night Sky 009

Pattern number: 1422    Composition: 100% polyester with acrylic backing    Finish: Crypton home  
Width: 54"- woven to railroad    Weight: 20.8 oz/yd    Type: Chenille  
Abrasion resistance: 63,000 double rubs    Flammability test: Cal 117 Section E, UFAC Class I, NFPA 260  
Cleaning code: W – spot clean with soap and water  
Common uses: Upholstery    Country of origin: China

Due to variances in colour printers and computer screens, please be aware that colour in this brochure and online may vary from the actual sample.



**POWELL &  
BONNELL**