

# POWELL & BONNELL

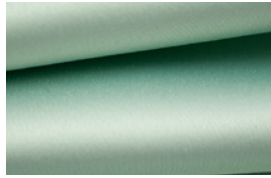
## HARLOW 1350



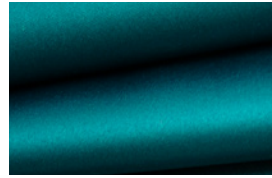
42<sup>nd</sup> Street 001



White Heat 002



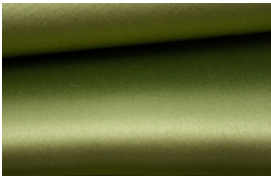
Now Voyager 003



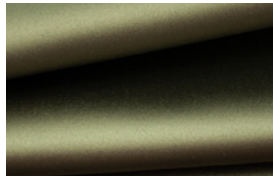
China Seas 004



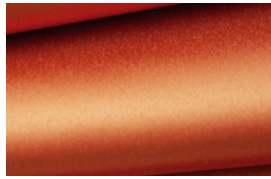
Lime Light 005



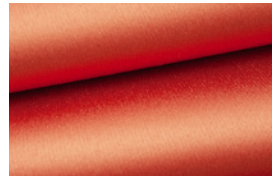
How Green Was My Valley 006



Key Largo 007



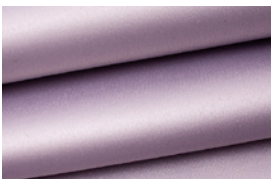
Sunset Blvd 008



Red Dusk 009



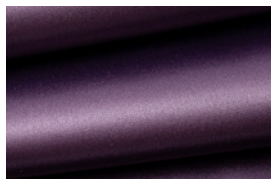
Some Like It Hot 010



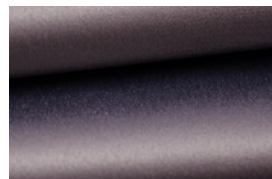
Arsenic & Old Lace 011



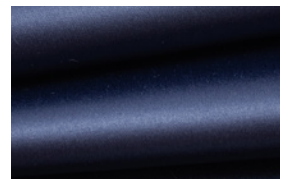
Jezebel 012



The Grape of Wrath 013



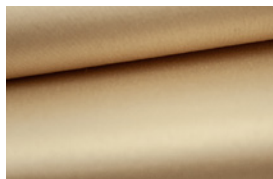
Double Idemnity 014



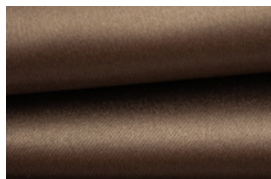
Dark Passage 015



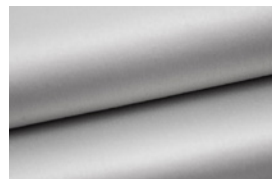
Mildred Pierce 016



Platinum Blonde 017



High Sierra 018



Dinner at Eight 019



Maltesse Falcon 020



It Happned One Night 021



Jungle 022

Pattern number: 1350    Composition: 100% polyester FR    Finish: n/a  
 Width: 59"    Weight: 8.0 oz/yd    Type: Satin - drapery / multi-purpose  
 Abrasion resistance: 30000    Flammability test: NFPA 701  
 Common uses: Drapery    Country of origin: China

Due to variances in colour printers and computer screens, please be aware that colour in this brochure and online may vary from the actual sample.



**POWELL &  
BONNELL**