

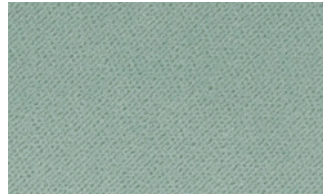
POWELL & BONNELL FOREST 1197



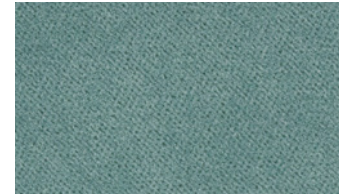
Winter Wren 010



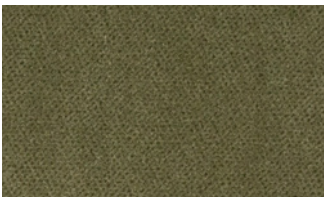
Shrew 020



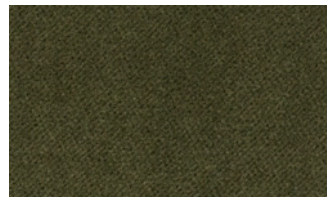
Blue Spruce 030



Confire 040



Peat 060



Resin 070



Lemming 080



Waxwing 090



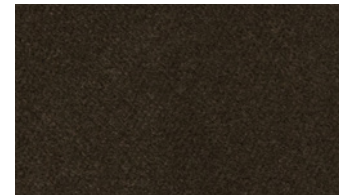
Paper Birch 100



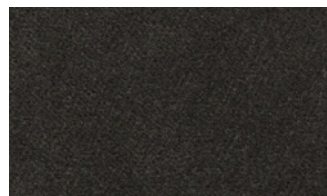
Bark 110



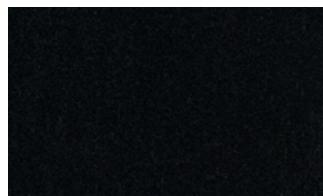
Sugar Maple 130



Bole 140



Timber 150



Dusk 160

Pattern number: 1197 Composition: 83% polyester, 17% cotton Finish: Stain repellent

Width: 54" Weight: 16.5 oz Type: Velvet Abrasion resistance: 1000000

Flammability test: Cal 117, Section E, UFAC Class I

Cleaning code: S Common uses: Upholstery Country of origin: China

Due to variances in colour printers and computer screens, please be aware that colour in this brochure and online may vary from the actual sample.



POWELL &
BONNELL