



POWELL & BONNELL



9566

BIRDSALL SCONCE

The Birdsall Sconce is the perfect balance of architectural form and LED technology. The piece's bold scale creates a grand architectural statement. The concealed integrated LED strips illuminate a hammered metal facade. Optional up & downlighting capabilities are available.

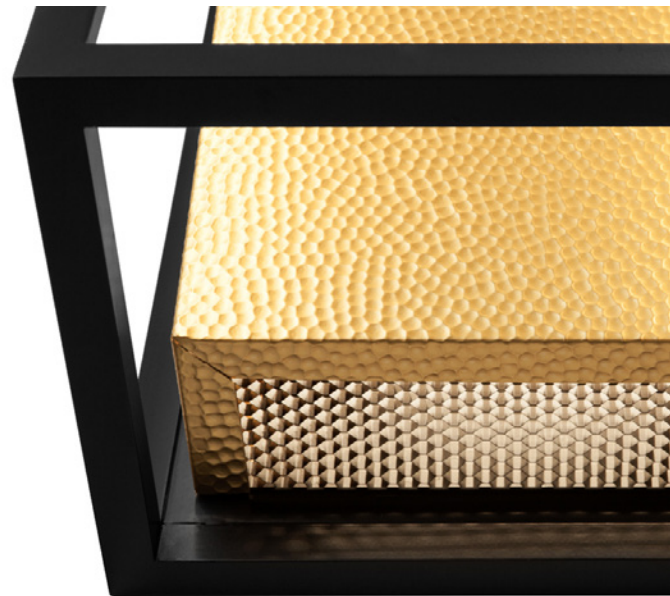
Birdsall Sconce - Interior (9565): 18"h x 8"w x 4"d

Birdsall Sconce - Exterior (9566): 30"h x 12"w x 9"d

WWW.POWELLANDBONNELL.COM



POWELL & BONNELL



9566

BIRDSALL SCONCE

Shown As: Satin Black powder coated frame with Gold Anodized Aluminum hammered metal facade. *Other finishes available.*

Also Available: Birdsall Lantern (9567)

WWW.POWELLANDBONNELL.COM